

# Unboxing your Duplicator I3 V2.1

1. Place the I3 V2.1 box on a stable surface. Placing it centrally on the floor will provide the best accessible position for unpacking.



2. Open the box. Here you will see the 3D Printer Getting Started Guide and the Warranty Card.

We recommend that you use the Guide to guide you through the setup process first.



3. Lift the printer gently up with 2 hands on the top frame of I3 V2.1. You may need one person to help to hold the box still.



4. In the box, there are the User Manual, a roll of 10M filament and the Wanhao Masking Tape.



5. Position the printer on a sturdy table to optimise the approach and with plenty of surface surrounding it.

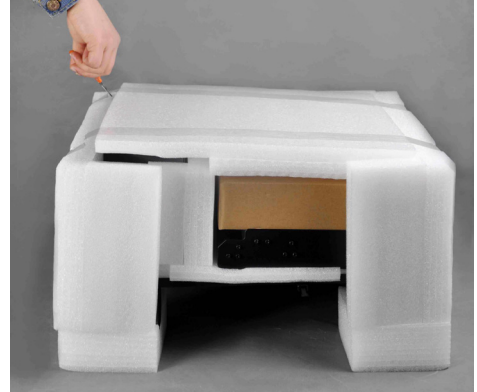
**NOTE:** Please do not use excessive force when unpacking your printer. Excessive force may lead to damage to the printer and its components.



6. Remove the plastic bag form the top of the printer.



7. Cut the two tapes from the side of the printer.



8. Remove the top foam protector.



9. Get the Spare parts box out from the printer gently.



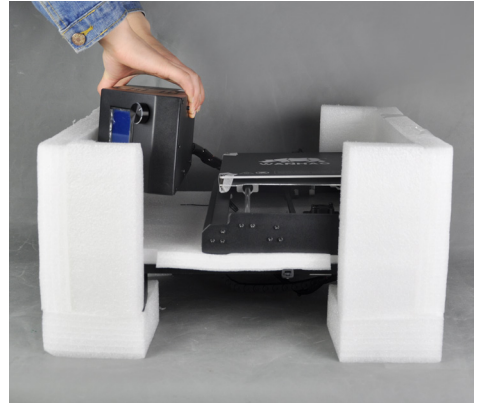
10. Remove the foam on the printer base.



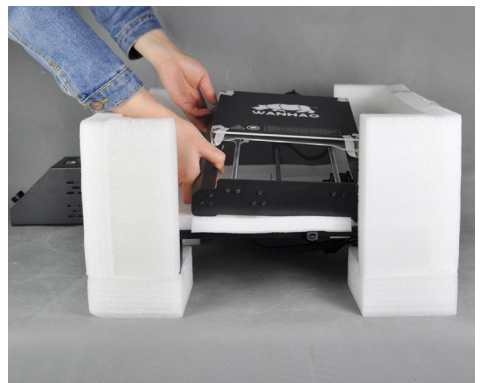
11. Remove the foam around the control box.



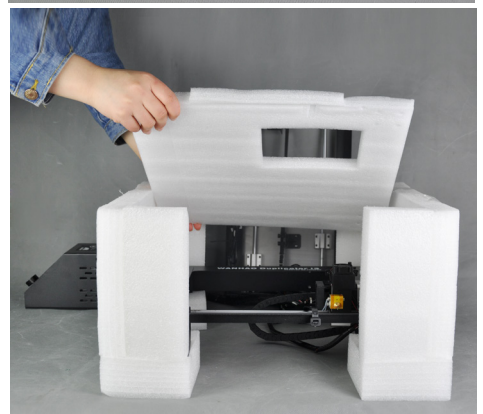
12. Get the Control box out from the printer gently.



13. Get the Printer Steel Base out from the printer gently.



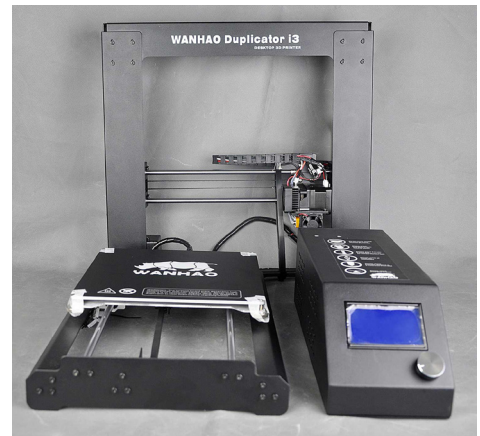
14. Remove the foam on the printer steel frame gently.



15. Remove the side foam of the printer.



16. Put the the printer parts in the right direction.



17. That's all you can get.



18. Open the Sapre parts box, you will see the USB Cable,Filament Spool Holder,Fiament Spool Stand,4GB MicroSD Card,Power Cable,a Tool bag(6 Hex Bolts, PTFE Tube, 2 Cable ties and 4 wrenches) ,a Scraper.and a 0.4mm drill bit.

